

FOR SALE

105.33± Acres

Possible Solar Farm



Lund Highway

Cedar City, UT 84720

Property Features

- Located on Lund Highway
- Possible Solar Farm
- Buyer to Verify Acreage



SALE PRICE - ~~\$421,320~~
\$263,325

For more information:

Brandon Vandermyde

phone: 435.627.5707
email: brandonv@naiexcel.com

Neil Walter, CFA, MBA

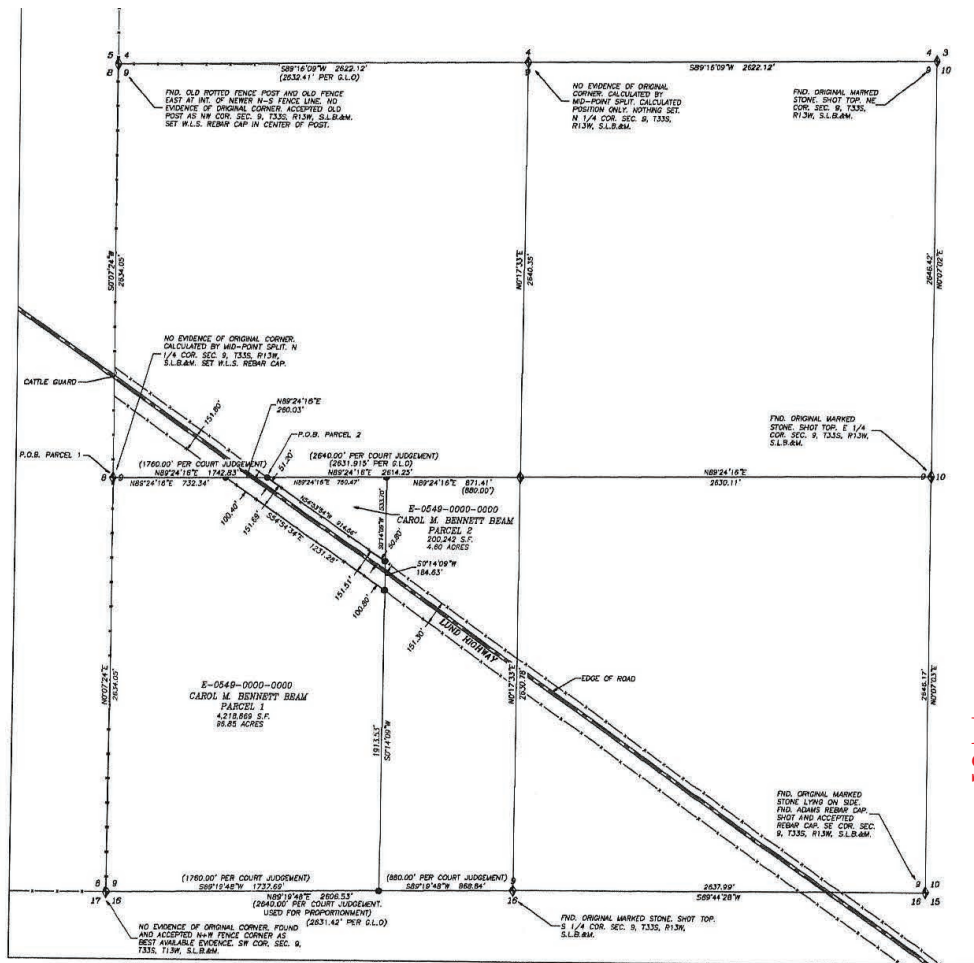
office: 435.628.1609
phone: 435.627.5720
email: nwalter@naiexcel.com

NO WARRANTY OR REPRESENTATION, EXPRESS OR IMPLIED, IS MADE AS TO THE ACCURACY OF THE INFORMATION CONTAINED HEREIN, AND THE SAME IS SUBMITTED SUBJECT TO ERRORS, OMISSIONS, CHANGE OF PRICE, RENTAL OR OTHER CONDITIONS, PRIOR SALE, LEASE OR FINANCING, OR WITHDRAWAL WITHOUT NOTICE, AND OF ANY SPECIAL LISTING CONDITIONS IMPOSED BY OUR PRINCIPALS NO WARRANTIES OR REPRESENTATIONS ARE MADE AS TO THE CONDITION OF THE PROPERTY OR ANY HAZARDS CONTAINED THEREIN ARE ANY TO BE IMPLIED.

FOR SALE
105.33± Acres
Cedar City, Utah



FOR SALE
105.33± Acres
Cedar City, Utah



Recent
Survey

FOR SALE
105.33± Acres
Cedar City, Utah



Kanarrville, Utah



Fort Cedar Commerce



• Cedar City



Fiddler's Canyon



Black Rock Mountain – Iron County

Driving Distance to Major Cities from Property

SALT LAKE CITY, UT	256 miles
LAS VEGAS, NV	175 miles
DENVER, CO	592 miles
LOS ANGELES, CA	444 miles
SAN FRANCISCO, CA	754 miles
SEATTLE, WA	395 miles

Location Information

IRON COUNTY was originally named Little Salt Lake Valley, and renamed for the iron mines west of Cedar City. Cedar City has earned the distinction of being Festival City, USA due to the incredible theatrical and cultural offerings, like the Utah Shakespearian Festival, Neil Simon festival, American Children's Christmas Festival and the Cedar City Livestock Fest.

Southern Utah University is a dynamic teaching and learning community inspired by its unique natural surroundings. As Utah's designated public liberal arts and sciences university, SUU engages students in a personalized and rigorous experiential education, empowering them to be productive citizens, socially responsible leaders, and lifelong learners. SUU currently offers more than 150 majors including a reputable aviation program along with health sciences and performing & visual arts.

- POPULATION: Iron County - 43,424
- ECONOMY: Median Income - \$39,914 / Cost of Living Index - 93.5 / Median age - 24.2
- HOUSING: Median house value of \$220,705

For more information:

Brandon Vandermyde

phone: 435.627.5707
email: brandonv@naiexcel.com

Neil Walter, CFA, MBA

office: 435.628.1609
phone: 435.627.5720
email: nwalter@naiexcel.com

[CLICK HERE FOR MORE INFORMATION](#)