



*Parcel outlines are approximate



COMMERCIAL REAL ESTATE SERVICES, WORLDWIDE

243 E. St. George Blvd. Suite 200
St George, Utah 84770
435.628.1609 | naiexcel.com

5757 Sevier River Ranch | Levan, UT

Kevin O'Brien, Ph.D
435.627.0556
kevin@naiexcel.com

Jon Walter, MBA
435.627.5575
jwalter@naiexcel.com

Property Summary

OFFERING PRICE **\$59,900**

LOT SIZE | ACRES **9.9**

TAX ID **XD00-4481-57**

TYPE **Land | Farm / Ranch**

ZONING **AG**

- Great ranchette less than 15 minutes from Yuba Lake State Park and the Sevier River.
- Ranchette has 5 RV-sized pads, a shed, and is located off I-15 with year-round access, great mountain views and are the perfect way to enjoy the outdoors.
- Close Proximity to Yuba Lake, Sevier River, Mountains and UTV trails everywhere. Just over an hour from Provo, great mountain views, flat terrain, less than 5 minutes from I-15, year round access, well maintained dirt roads



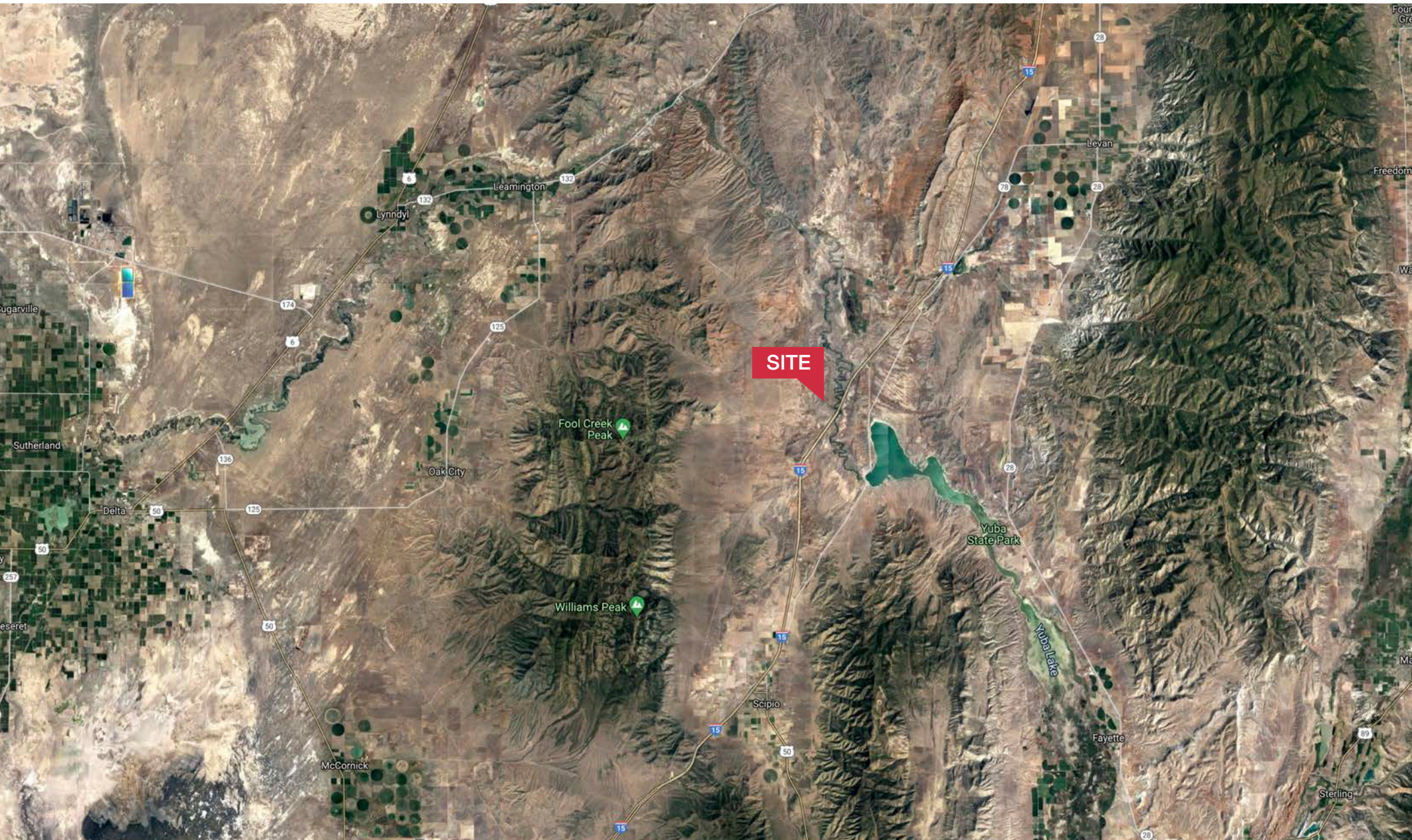
FOR MORE INFORMATION



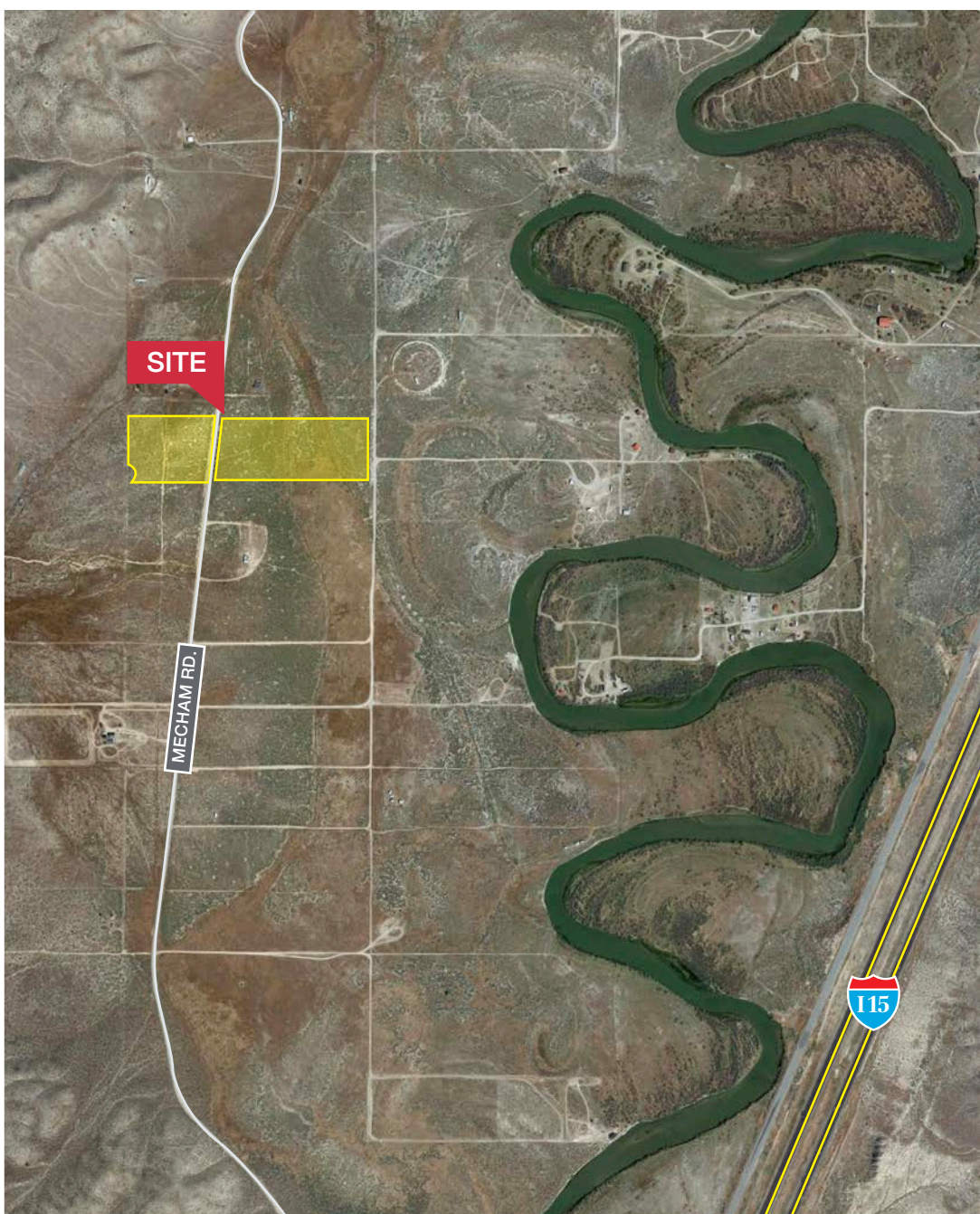
CLICK HERE

OR TEXT 20737 TO 39200

Area Map



Site Map





Distance to Major Cities

| | |
|-------------------------|-----------|
| Salt Lake City, Utah | 112 MILES |
| Las Vegas, Nevada | 319 MILES |
| Los Angeles, California | 587 MILES |
| San Diego, California | 649 MILES |
| Denver, Colorado | 492 MILES |
| Phoenix, Arizona | 561 MILES |



COMMERCIAL REAL ESTATE SERVICES, WORLDWIDE

243 E. St. George Blvd. Suite 200
St George, Utah 84770
435.628.1609 | naiexcel.com

Market Research

Our offices publish commercial and residential market research across Utah and Nevada. NAI Excel and NAI Vegas are known for their deep and rich data. Lending institutions, appraisers, and business consultants look to our market reports as the authority on commercial real estate market trends. We have built and maintained a comprehensive database comprised of data collected from some of the largest appraisal firms in the region, NAI transaction, and other data. NAI publishes statistics for the office, retail, industrial, and multifamily markets. Additionally, single family housing reports are published for every major market from Las Vegas to Salt Lake City, through our affiliate.

CLICK HERE



VIEW MARKET STATISTICS
FOR OFFICE, RETAIL,
INDUSTRIAL & MULTIFAMILY

<https://excelcres.com/market-research>

Kevin O'Brien, Ph.D
435.627.0556
kevin@naiexcel.com

Jon Walter, MBA
435.627.5575
jwalter@naiexcel.com