

FOR SUB LEASE

1,227 ± SF

Coral Canyon
Town Center

2303 N Coral Canyon Blvd
Washington, UT 84780

Property Features

- This is a sub-lease listing contingent upon third party approval
- Retail & Office Space Available
- Attractive Complex
- Very Well-Maintained
- Great Location Off of I-15, Exit 16
- Handsome Construction
- Covered Parking Available

LEASE PRICE – \$.95/SF/NNN

For more information:

Meeja McAllister

office: 435.628.1609
direct: 435.627.5710
email: meeja@naiexcel.com

NO WARRANTY OR REPRESENTATION, EXPRESS OR IMPLIED, IS MADE AS TO THE ACCURACY OF THE INFORMATION CONTAINED HEREIN, AND THE SAME IS SUBMITTED SUBJECT TO ERRORS, OMISSIONS, CHANGE OF PRICE, RENTAL OR OTHER CONDITIONS, PRIOR SALE, LEASE OR FINANCING, OR WITHDRAWAL WITHOUT NOTICE, AND OF ANY SPECIAL LISTING CONDITIONS IMPOSED BY OUR PRINCIPAL. NO WARRANTIES OR REPRESENTATIONS ARE MADE AS TO THE CONDITION OF THE PROPERTY OR ANY HAZARDS CONTAINED THEREIN ARE TO BE IMPLIED. THE INFORMATION PORTRAYED ON THE MAP, WHILE NOT GUARANTEED, HAS BEEN SECURED FROM SOURCES DEEMED RELIABLE. CONSULT A SURVEYOR FOR PRECISE BOUNDARIES.

FOR SUB LEASE
Coral Canyon
Town Center



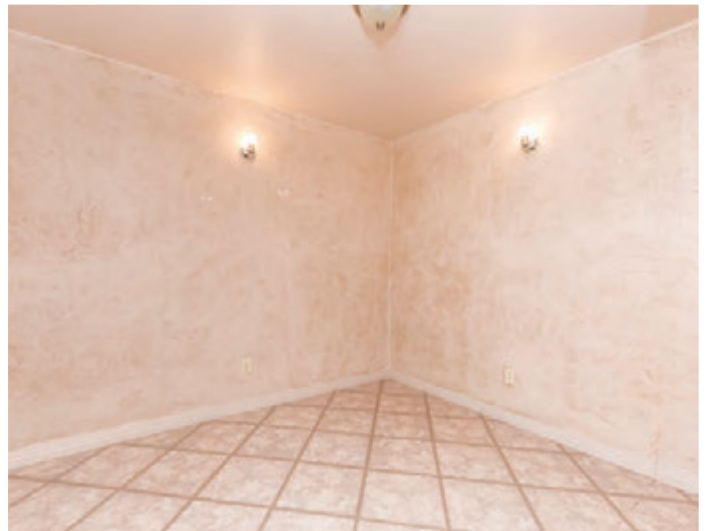
FOR SUB LEASE
Coral Canyon
Town Center



FOR SUB LEASE
Coral Canyon
Town Center



FOR SUB LEASE
Coral Canyon
Town Center



FOR SUB LEASE
Coral Canyon
Town Center



FOR SUB LEASE
Coral Canyon
Town Center



AREA INFORMATION

Coral Canyon Town Center



Ancestor Square



Town Square

Driving Distance to Major Cities from Property

SALT LAKE CITY, UT	303 miles
LAS VEGAS, NV	123 miles
DENVER, CO	631 miles
LOS ANGELES, CA	387 miles
SAN FRANCISCO, CA	684 miles
SEATTLE, WA	1,141 miles

Location Information

WASHINGTON COUNTY is known for warm winter weather, snowbirds, and beautiful red rock scenery. It has been known as Utah's Dixie since pioneers settled here in the 1850's. Championship golf, tennis, walking paths, biking trails, hiking, warm, snow-free winters and year long low humidity all make life attractive here.

Home to the world-renowned Snow Canyon State Park and the Tuacahn Center for the Arts with its 1,920 seat outdoor amphitheatre and the magnificent Zion National Park, the county has the benefit of a large, ultra-modern convention center and the 1,200 seat Cox Performing Arts Theatre that is on the Dixie State University campus.

- POPULATION: Washington County - 155,602
St George - 76,817
- LAND AREA: 2,427 Square Miles
- ECONOMY: Median Income of \$49,498 with a Cost of Living Index of 102 and an Unemployment Rate of 3.6%
- HOUSING: Median house value of \$234,800

For more information:

Meeja McAllister

office: 435.628.1609
direct: 435.627.5710
email: meeja@naiaexcel.com

[CLICK HERE FOR MORE INFORMATION](#)