

# Dixie Drive & Canyon View Drive

St. George, UT 84790



COMMERCIAL REAL ESTATE SERVICES, WORLDWIDE

Offered By:

**Greg Whitehead, MBA**

**Gregg McArthur, MBA**

243 E. St. George Blvd. Suite 200

St George, Utah 84770

(435) 628.1609 | [naiexcel.com](http://naiexcel.com)

office: 435.628.1609

direct: 435.627.5733

email: [gregw@naiexcel.com](mailto:gregw@naiexcel.com)

office: 435.628.1609

direct: 435.627.5740

email: [greggm@naiexcel.com](mailto:greggm@naiexcel.com)



# Property Summary

FOR SALE | LAND

ADDRESS

Dixie Drive & Canyon View Drive  
St. George, UT 84770

LOT SIZE | ACRES

5.5±

TAX ID

SG-6-2-35-423

## OFFERING TERMS

SALE PRICE

**\$195,000/ACRE**

FOR MORE INFORMATION

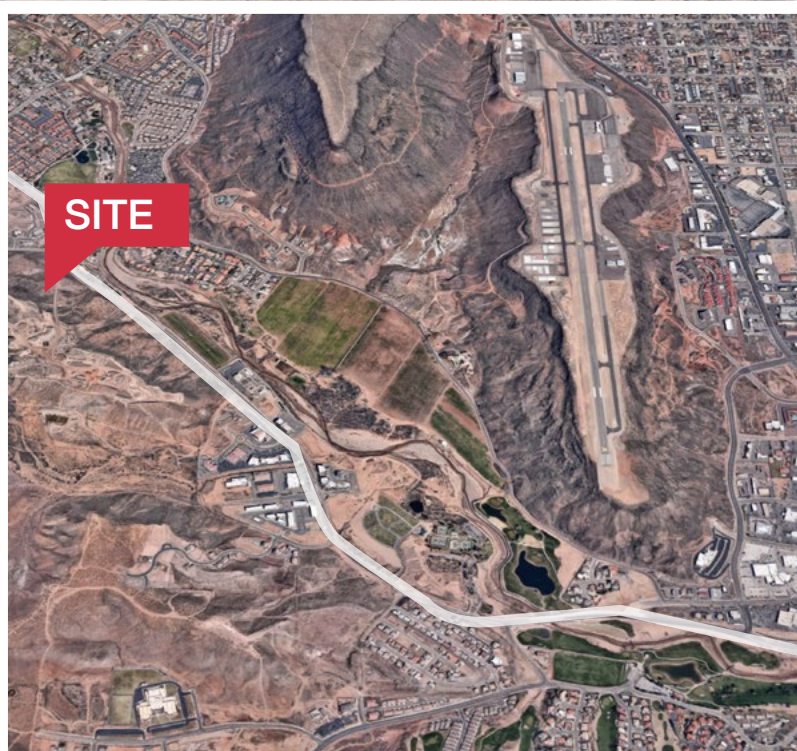
<http://helloarti.com/view/29363>

TEXT **16915** TO **39200**

- Zoned for Medium Density Residential (15 Units per Acre)
- Surrounded by Multifamily Nightly Rentals
- Beautiful unobstructed views of Red Mountain and Snow Canyon
- Preliminary soil tests have found the land to be suitable for build out











FOR SALE | LAND



## Population/Economy

- Washington County — 155,602
- St. George — 76,817
- Median Income of \$49,498
- Cost of Living Index of 102
- Unemployment Rate of 3.6%
- Median house value of \$234,800

## Days of Sunshine

- St. George — 300 days a year
- United States — 205 days a year

## Sporting Events

- 42 major sports events bring approx. 62,000 participants & 116,000 out of town visitors — bringing approx. \$78 million to the economy (The Spectrum)
- Ironman 70.3 St. George — 2,500 triathletes
- St. George Marathon — 7,800 runners
- Huntsman Senior Games — 11,000 competitors
- NJCAA Softball Championship tournament — 16 teams from around the nation

> VIEW MARKET STATISTICS FOR OFFICE, RETAIL, INDUSTRIAL & MULTIFAMILY AT <https://excelcres.com/market-research/>

## Distance to Major Cities

	FROM ST. GEORGE
Salt Lake City, Utah	303 MILES
Las Vegas, Nevada	123 MILES
Los Angeles, California	387 MILES
San Diego, California	449 MILES
Denver, Colorado	631 MILES
Phoenix, Arizona	417 MILES

## Regional Parks Visitation

	2016	2011	2007	Distance
Zion National Park	4,317,028	2,847,403	2,679,181	46.5 MILES
Bryce Canyon National Park	2,365,110	1,285,492	1,012,563	141 MILES
Canyonlands National Park	776,218	435,908	417,560	347 MILES
Capitol Reef National Park	1,064,904	662,661	554,907	209 MILES
Arches National Park	1,585,718	1,014,405	860,181	335 MILES
Grand Canyon National Park	5,969,811	4,298,178	4,413,668	146 MILES



COMMERCIAL REAL ESTATE SERVICES, WORLDWIDE

243 E. St. George Blvd. Suite 200  
St George, Utah 84770  
(435) 628.1609 | [naixelcel.com](http://naixelcel.com)

Offered By:

**Greg Whitehead, MBA**

office: 435.628.1609  
direct: 435.627.5733  
email: [gregw@naixelcel.com](mailto:gregw@naixelcel.com)

**Gregg McArthur, MBA**

office: 435.628.1609  
direct: 435.627.5740  
email: [greggm@naixelcel.com](mailto:greggm@naixelcel.com)