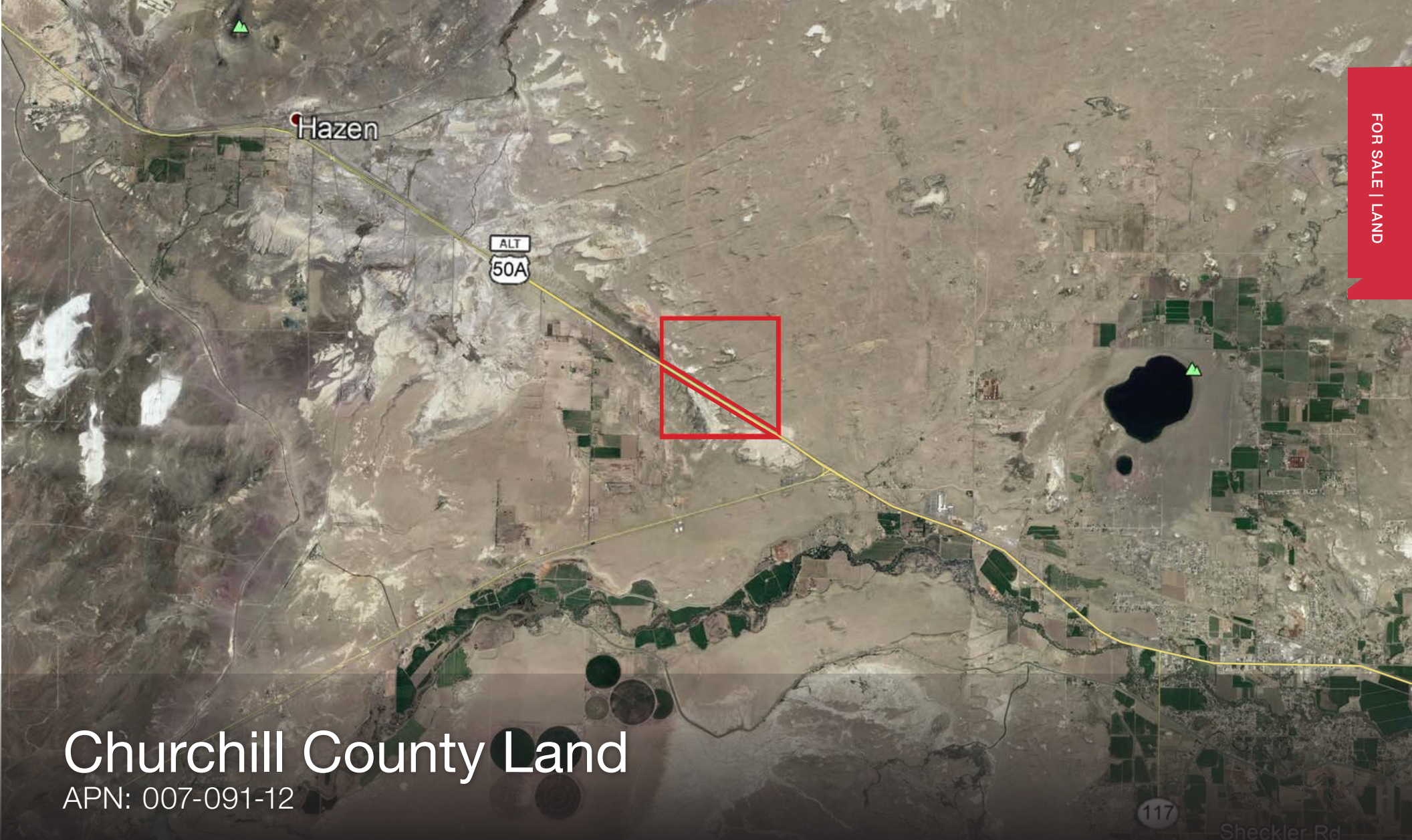


FOR SALE | LAND



# Churchill County Land

APN: 007-091-12



8945 W. Russel Road Suite 110  
Las Vegas, NV 89148

(702) 383.3383 | [naivegas.com](http://naivegas.com)

Offered By: **Steve Nosrat**  
Vice President

cell: 310.421.8483  
direct: 702.534.1718  
email: [snosrat@naivegas.com](mailto:snosrat@naivegas.com)

**Matt Jenkins**  
Senior Commercial Advisor

cell: 702.379.3979  
direct: 702.534.1717  
email: [mjenkins@naivegas.com](mailto:mjenkins@naivegas.com)

NO WARRANTY OR REPRESENTATION, EXPRESS OR IMPLIED, IS MADE AS TO THE ACCURACY OF THE INFORMATION CONTAINED HEREIN, AND THE SAME IS SUBMITTED SUBJECT TO ERRORS, OMISSIONS, CHANGE OF PRICE, RENTAL OR OTHER CONDITIONS. PRIOR SALE, LEASE OR FINANCING, OR WITHDRAWAL WITHOUT NOTICE, AND OF ANY SPECIAL LISTING CONDITIONS IMPOSED BY OUR PRINCIPAL. NO WARRANTIES OR REPRESENTATIONS ARE MADE AS TO THE CONDITION OF THE PROPERTY OR ANY HAZARDS CONTAINED THEREIN ARE TO BE IMPLIED. THE INFORMATION PORTRAYED ON THE MAP, WHILE NOT GUARANTEED, HAS BEEN SECURED FROM SOURCES DEEMED RELIABLE. CONSULT A SURVEYOR FOR PRECISE BOUNDARIES.

30696

# Property Highlights

- ±640 Total Acres
  - Zoned RR20
  - ±15,000 Total Feet of Frontage on US Highway 50 Alternate Route
- \*Buyer to Verify

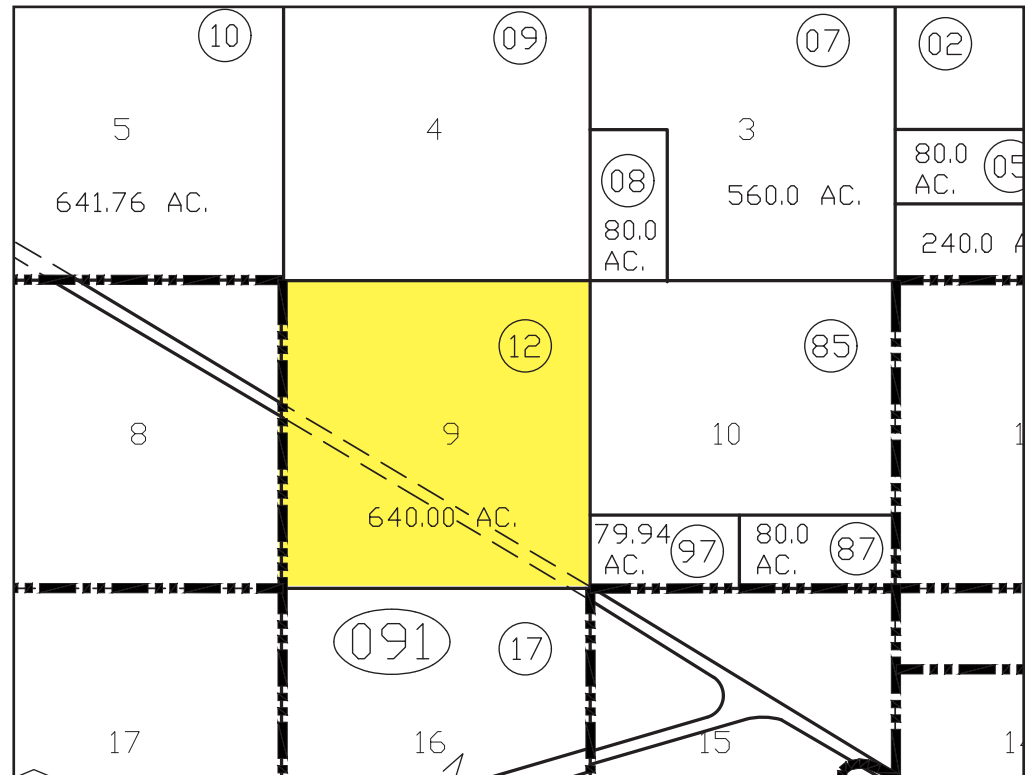
**SALE DETAILS**

List Price:  
**\$1,600,000**  
**\$2,500 PER ACRE**

Land Available:  
**±640 ACRES**

# Property Details

- ±1,300 Feet from Closest Power From S/W Corner of Property
  - Southeast Corner Located ±3,500 Feet from US Highway 50 \ US Highway 50 Alternate Route
  - Located within 7 Miles of Fallon, NV
  - Located ±29 Miles from Tesla Gigafactory
- \*Buyer to Verify





LAKE TAHOE

RENO

TAHOE RENO  
INDUSTRIAL CENTER

FERNLEY

FOR SALE | LAND



**NAI Vegas**  
COMMERCIAL REAL ESTATE SERVICES, WORLDWIDE

8945 W. Russel Road Suite 110  
Las Vegas, NV 89148

(702) 383.3383 | [naivegas.com](http://naivegas.com)

Offered By:

**Steve Nosrat**

Vice President

cell: 310.421.8483

direct: 702.534.1718

email: [snosrat@naivegas.com](mailto:snosrat@naivegas.com)

**Matt Jenkins**

Senior Commercial Advisor

cell: 702.379.3979

direct: 702.534.1717

email: [mjenkins@naivegas.com](mailto:mjenkins@naivegas.com)

NO WARRANTY OR REPRESENTATION, EXPRESS OR IMPLIED, IS MADE AS TO THE ACCURACY OF THE INFORMATION CONTAINED HEREIN, AND THE SAME IS SUBMITTED SUBJECT TO ERRORS, OMISSIONS, CHANGE OF PRICE, RENTAL OR OTHER CONDITIONS, PRIOR SALE, LEASE OR FINANCING, OR WITHDRAWAL WITHOUT NOTICE, AND OF ANY SPECIAL LISTING CONDITIONS IMPOSED BY OUR PRINCIPAL. NO WARRANTIES OR REPRESENTATIONS ARE MADE AS TO THE CONDITION OF THE PROPERTY OR ANY HAZARDS CONTAINED THEREIN ARE TO BE IMPLIED. THE INFORMATION PORTRAYED ON THE MAP, WHILE NOT GUARANTEED, HAS BEEN SECURED FROM SOURCES DEEMED RELIABLE. CONSULT A SURVEYOR FOR PRECISE BOUNDARIES.

30696